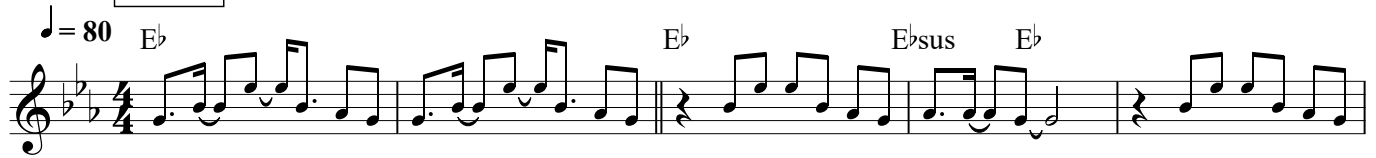


# This Is Our God

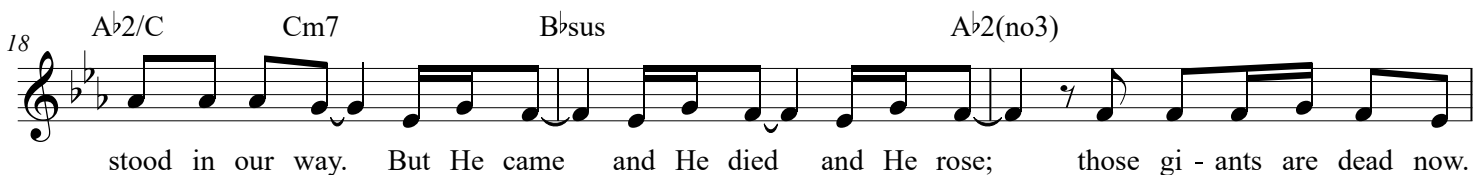
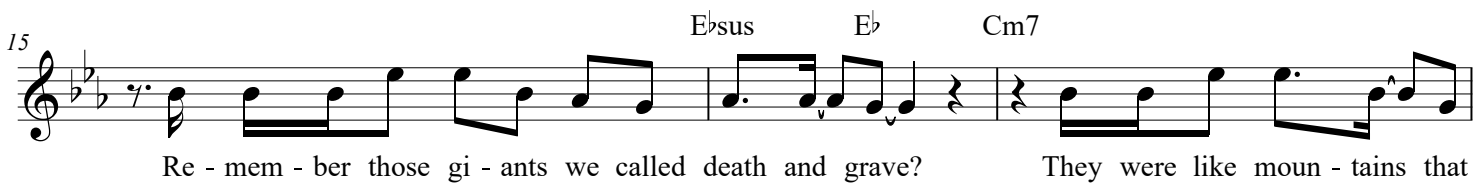
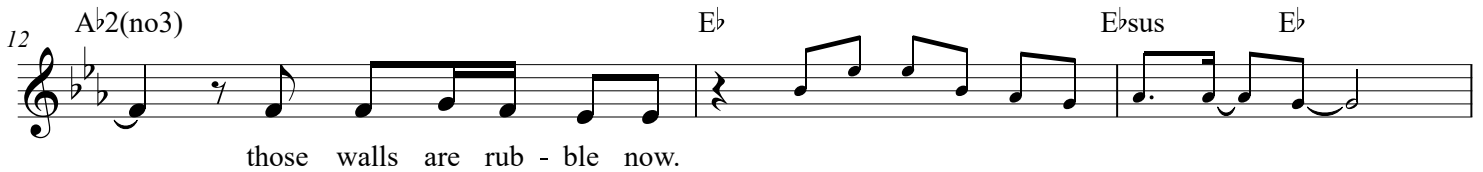
(based on the recording by Phil Wickham)

Words and Music by  
Phil Wickham, Steven Furtick,  
Brandon Lake and Pat Barrett

## INTRO



## VERSE 1




CCLI Song # 7211413

© Brandon Lake Music | Capitol CMG Genesis | Housefires Sounds | Music by Elevation Worship Publishing | Phil Wickham Music | Simply Global Songs  
For use solely with the SongSelect® Terms of Use. All rights reserved. [www.ccli.com](http://www.ccli.com)

CCLI License # 3233926

**CHORUS**

21 E<sup>b</sup> E<sup>b</sup>sus E<sup>b</sup> E<sup>b</sup>/G A<sup>b</sup>2 E<sup>b</sup> B<sup>b</sup>sus B<sup>b</sup> E<sup>b</sup>/G



This is our God, this is who He is:     He loves us.     This is our

25 Musical notation for measures 25-31 of 'The Sound of Silence'. The notation is on a single staff with a treble clef and a key signature of two flats (Bb and Eb). The notes are: Measure 25: G4 (quarter), A4-Bb4 (beamed eighth notes), C5 (quarter). Measure 26: D5 (quarter), C5-Bb4 (beamed eighth notes), A4 (quarter). Measure 27: G4 (quarter), F4 (quarter), E4 (quarter). Measure 28: D4 (quarter), C4 (quarter), B3 (quarter). Measure 29: A3 (quarter), G3 (quarter), F3 (quarter). Measure 30: E3 (quarter), D3 (quarter), C3 (quarter). Measure 31: B2 (quarter), A2 (quarter), G2 (quarter). Chord symbols above the staff are: A♭2, E♭, B♭sus, B♭, E♭/G, A♭2, E♭.

God, this is what He does: He saves us. He bore the cross, beat the grave. Let


## TURNAROUND

28 B $\flat$  Cm7 B $\flat$  A $\flat$ 2 B $\flat$ sus E $\flat$  E $\flat$ sus E $\flat$   
*2nd time to Coda*  $\Phi$

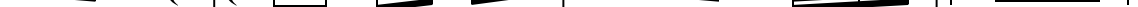
heav - en and earth pro - claim this is our God, King Je - sus.

**VERSE 2**[illegible]

Re - mem - ber that fear that took our breath a - way? Faith so weak that we could

35 

bare - ly pray? But He heard ev - 'ry word, ev - 'ry whis - per. Now those al - tars in the

39 

wil - der - ness            tell the sto - ry of His faith - ful - ness. Nev - er once    did He fail, and He nev -

43  $A\flat^2$   $E\flat$   $E\flat/G$  *D.S. al Coda*

er will.

This is our

45 

God, King Je - sus.

**BRIDGE 1**

Who pulled me out of that pit? He did, He did. Who paid for all of our sin?

**BRIDGE 2a**

No - bod - y but Je - sus. Who res - cued me from that grave? Yah - weh, Yah - weh.

**BRIDGE 2b**

Who gets the glo - ry and praise? No - bod - y but Je - sus. Who res - cued me from that grave?

Yah - weh, Yah - weh. Who gets the glo - ry and praise? No - bod - y but Him. This is our

**CHORUS**

God, this is who He is: He loves us. This is our God, this is what He does: He saves us. He bore the cross, beat the grave. Let heav - en and earth pro - claim this is our

**ENDING**

God, King Je - sus. He bore the cross, beat the grave. Let

**OUTRO**

heav - en and earth pro - claim this is our God, King Je - sus.

71

E<sup>b</sup>sus E<sup>b</sup>

E<sup>b</sup>sus E<sup>b</sup>

The image shows a single staff of music in E-flat major, 4/4 time. Measure 71 contains a dotted quarter note on G4, an eighth note on A4, a quarter note on Bb4, and a half note on C5. Measure 72 contains a quarter rest, followed by quarter notes on D5, E5, F5, and G5. Measure 73 contains a dotted quarter note on G4, an eighth note on A4, a quarter note on Bb4, and a half note on C5. Measure 74 contains a whole note on C5. The key signature has two flats (Bb and Eb), and the piece concludes with a double bar line.